

Carbonear Zoning- Plan Area

SCHEDULE
C

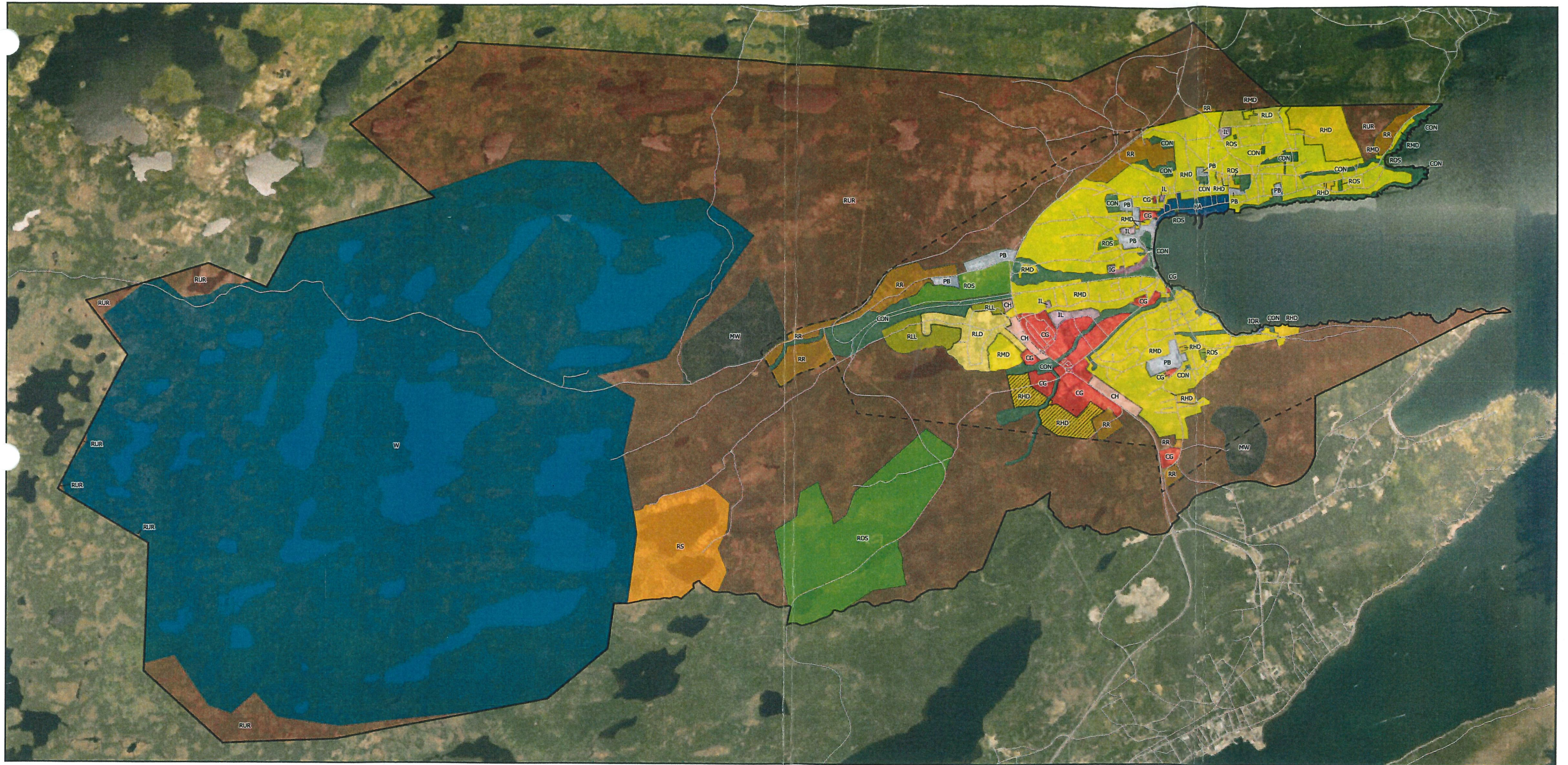
LAST UPDATED
2025-12-03

SCALE
1:37,500
0 250 500 m

NORTH
▲

PROJ.
NAD83 CSRS
MTM 1

DATA SOURCE
CanVec, Gov't of Nfld,
Town of Carbonear



LEGEND

■ CG	Commercial - General	■ MW	Mineral Working	■ RR	Residential - Rural
■ CH	Commercial - Highway	■ PB	Public Buildings	■ RS	Residential - Seasonal
■ CON	Conservation	■ RLL	Residential - Large Lot	■ RUR	Rural
■ HA	Heritage Area	■ RLD	Residential - Low Density	■ W	Watershed
■ IG	Industrial - General	■ RMD	Residential - Medium Density	 	Fox Farm Residential Area
■ IL	Industrial - Light	■ RHD	Residential - Higher Density	 	Municipal boundary
■ IOR	Industrial - Ocean Related	■ ROS	Recreational Open Space	 	Plan Area

MINISTER

**Development Regulations/Amendment
REGISTERED**

Number 0950-0045-2026
 Date January 29, 2026
 Signature [Signature]

TOWN AUTHORIZATION

[Signature]
Sam Slade, Mayor

[Signature]
Cynthia Davis, Chief Administrative Officer

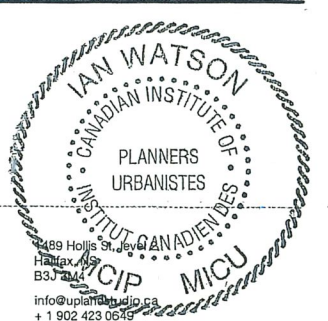
12th January 2026
 Day Month Year

PROFESSIONAL CERTIFICATION

I certify that this Municipal Plan for the Town of Carbonear has been prepared in accordance with the requirements of the Urban and Rural Planning Act, 2000:

[Signature]
Ian Watson, MCIP, LPP

UPLAND
PLANNING + DESIGN STUDIO



489 Hollis St.,
 St. John's, NL
 A1B 3J2
 info@upland.ca
 +1 902 423 0649